

 **CLUB  
MARINE**  
Series

***2009-2010***

Incorporating

Club Team Premiership & Class Championship

**NOTICE  
OF  
RACE**

## NOTICE OF RACE

The 2009-2010 Club Marine Series will be conducted on the waters of Port Phillip from 10<sup>th</sup> October 2009 to 10<sup>th</sup> April 2010

- The Organising Authority (OA) for the Club Marine Series, incorporating the Club Teams Premiership and Class Championship Series is Yachting Victoria (YV) on behalf of the Participating Clubs.
- The OA shall delegate the administration of the series to the Keel Boat Committee (KBC) and this NOR shall be the basis for the races run by the Participating Clubs which constitute the Club Marine Series.
- The OA will collate results from events run by the Participating Clubs and will be responsible for declaring the final championship positions.

The Participating Clubs listed below will conduct racing on behalf of the Organising Authority:

- Hobson's Bay Yacht Club
- Royal Brighton Yacht Club
- Royal Melbourne Yacht Squadron
- Royal Yacht Club of Victoria
- Sandringham Yacht Club

### 1.0 RULES

#### 1.1 General

The Club Marine Series will be governed by the rules as defined in the *Racing Rules of Sailing (RRS)*. RRS 52 shall not apply. This alters the RRS.

#### 1.2 Safety Regulations

**1.2.1** The Yachting Australia (YA) prescriptions and Special Regulations Part 1, Sections 1 – 6, Category 6 shall apply. Marine VHF Radios shall be carried, which may be permanently installed or be waterproof handheld and must be capable of operating on channels 12, 15, 16, 67, 69, 71, and 73.

**1.2.2** No anchors shall be carried on deck forward of the stem or with any part outboard.

**1.2.3** All boats shall lodge with their own club a Safety Compliance Declaration (SCD) covering the 2009-2010 season before their entry in their first Club Marine Series race.

Boats not complying with this requirement shall not be entered and will not be eligible for Club Marine Series scoring.

### 2.0 ADVERTISING

Boats may be required to display advertising chosen and supplied by the organising authority. When supplied, they shall be affixed in accordance with ISAF Regulation 20.4 Event Advertising.

### 3.0 ELIGIBILITY & ENTRY

Entry is open to keel boats with a valid AMS or IRC rating or Performance Handicap (PH). AMS and IRC boats shall start in their respective Performance Handicap Division.

To be scored in the Club Marine Series boats must enter the Host Club's Race.

#### 3.1 Class Championship

Class Championship may be scored for the classes listed below, for which no separate entry is required:

Sydney 38  
YW Diamonds  
Adams 10  
S80

Any additional classes that wish to be added must advise the Organising Authority before the 2<sup>nd</sup> October 2009.

Class boats must all sail in the same division.

#### 3.2 Divisions

There will be four Divisions: 0, 1, 2 and 3, as follows:

Division 0	As defined by the YV Performance Handicap Rules.
Division 1	As defined by the YV Performance Handicap Rules.
Division 2	As defined by the YV Performance Handicap Rules.
Division 3	As defined by the YV Performance Handicap Rules.

Group "K" Boats shall sail and be scored as a part of the appropriate Division. Their Division flag will be that of the Division in which they are entered.

Racing for this or any other division may be abandoned at the discretion of the Race Officer.

##### 3.2.1 PHD

All Performance Handicaps will be as supplied by the Performance Handicapping Committee of YV. Boat Owners/Skippers are reminded of their obligations under Rule 2 of the Performance Handicap Rules.

##### 3.2.2 AMS

Results will be calculated where a valid AMS Certificate is issued. Owners are reminded that they must use the sail and weight configuration as outlined in their AMS Certificate.

##### 3.2.3 IRC

Results will be calculated where a valid Endorsed IRC Certificate is issued. Owners are reminded that they must use the sail and weight configuration as outlined in their IRC Certificate.

The crew number requirements of IRC Rule 27.4.3 shall not apply

**3.3 Rating Certificate**

A copy of a valid Rating Certificate (where applicable) as issued by the appropriate Rating Authority shall be made available upon request by the host club or OA.

**3.4 Normal Entries**

Entries must be received by the host club before 1200hrs on the Thursday prior to each race. (Note: It is expected that many boats will enter directly through arrangements with their own club. It is up to the home clubs in these cases to ensure that the host club requirements are met).

**3.5 Club Teams Premiership Entries**

Each club shall advise the Organising Authority of its teams of five IRC and five AMS boats prior to 1200hrs on the Friday immediately before each race as per the schedule (Para 5).

The boats shall be from the AMS and IRC divisions with a maximum of three boats in any one division per rating system. Thus a club may have up to 6 representative boats (3 AMS and 3 IRC) in any one of the starting divisions.

The same boat may be entered in both IRC and AMS teams.

**3.6 Handicaps and Ratings**

The cut-off dates for all handicaps and ratings shall be 1200hrs on the Friday before each race. No changes to handicaps or ratings will be permitted after this time, except as a result of a measurement protest, or to correct rating office errors. The Race Committee may make corrections to handicaps or ratings at any time.

This changes RRS 78.2

**3.6.1** Performance Handicap recalculation will only be done using the results from this Club Marine Series.

**3.6.2** AMS ratings will be those issued by the Rating Authority (YV) and current at 1200 hrs on the Friday before the race.

**3.6.3** IRC ratings will be those issued by the Rule Authority (YA) and current at 1200hrs on the Friday before the race.

**4 ENTRY FEES**

**4.1** The Entry Fee for the series will be  
a) \$180 for Divisions 1, 2 and 3.  
b) \$560 for Division 0.

For Divisions 1 to 3 this is \$25 per afternoon race excepting Keeping Cancer at Bay which is \$30.

For Division 0 this is \$25 per afternoon race excepting Keeping Cancer at Bay which is \$60; and \$50 per morning race.

Casual entries are acceptable, or the series may be entered by paying a block entry

fee as above.

There will be no additional entry fees for entering other divisions such as IRC, AMS or Class Championships.

#### **4.2 Late Entries**

Late entries may be accepted at the discretion of the host club. The premium for late entry is an additional \$20 per race.

#### **5.0 SCHEDULE OF RACES**

DATE	Day	HOST CLUB	WARNING SIGNAL	
			Morning (Div 0)	Afternoon (All Divs)
10 October 2009	1	RYCV	1125 Hrs	1355 Hrs
7 November 2009	2	HBYC	1125 Hrs	1355 Hrs
5 December 2009	3	RMYS	1125 Hrs	1355 Hrs
6 February 2010	4	RBVC	1125 Hrs	1355 Hrs
20 February 2010	5	SYC	1125 Hrs	1355 Hrs
13 March 2010	6	KCAB	1125 Hrs	1355 Hrs
10 April 2010	7	RYCV	1125 Hrs	1355 Hrs

- Note:
1. The 1125 Warning Signal for the morning race is for Division 0 boats only
  2. Division 0 boats will sail two races on each race day.
  3. Divisions 1, 2 and 3 will sail one race per day in the afternoon.
  4. Day 6 is the annual Keeping Cancer at Bay Race.

#### **6.0 SAILING INSTRUCTIONS**

Sailing Instructions will be issued for the Club Marine Series, and will be available from the Club Marine Series Web site from late September.

#### **7.0 RACING AREA**

The racing area is on the waters of Port Phillip as described in the attached diagram  
Divisions 0 and 1 will race on separate non overlapping courses to Divisions 2 and 3.

##### **7.1 Division 0 and 1**

The course will be to the west of the main shipping channel unless weather conditions dictate a protected or shore based start as defined in the Sailing Instructions.

The start will be approximately equidistant from SYC and RYCV.

##### **7.2 Division 2 and 3**

The centre of the course will be in the vicinity of R2 to the east of the main shipping channel unless weather conditions dictate a protected or shore based start as defined in the Sailing Instructions.

## **8.0 COURSES**

Courses will be set within the areas designated in paragraph 7. Races will be conducted in accordance with the Sailing Instructions.

The target duration for each race is:

- 8.1** Division 0 Morning Race  
75 minutes.
- 8.2** All Other Starts (first warning signal 1355 hrs)  
90 minutes.

## **9.0 SCORING**

### **9.1 Club Marine Series Division Championship**

The Individual Club Marine Divisional Championship will be scored on the Low Points Scoring System (RRS Appendix A) modified as follows:

- Where five or less races are completed, each boat's total score will be the sum of its scores for all races.
- If six or more races are completed, each boat's series score shall be the total of her race scores excluding her worst score/s for 20% of races to the nearest lower whole number

When Group "K" racing is abandoned for race 1 or 2, Group "K" boats will be scored by allocating average points of the next 2 sailed races, rounded up to the nearest 0.1 point. When Group "K" racing is abandoned for later races, they will be scored by allocating average points of all races sailed to date, rounded up to the nearest 0.1 point.

### **9.2 Class Championship**

Class racing will be scored within each class based on the finishing places within the class, using the Low Points Scoring System (RRS Appendix A) modified as follows:

Where five or less races are completed, each boat's total score shall be the sum of its scores for all races.

There must be a minimum of 3 starters for a Class Championship Race to be scored.

### **9.3 Club Teams Premiership**

The Club Teams Premiership Series will be scored in accordance with the scoring system described in Attachment B.

Competing clubs are to nominate boats as follows:

#### **9.3.1 AMS Team**

5 boats with valid AMS rating

**9.3.2 IRC Team**

5 boats with valid IRC rating

The same boats may be nominated in both AMS and IRC teams  
Group "K" boats that are selected as team boats will not score in the Teams  
Premiership if their race is abandoned.

**9.4 Starters**

Four or more starters within a division will constitute a race.

**10 Group "K" (in any division):**

Each Home Club shall designate its own Group "K" boats that are limited by Class Rules or their design to lighter weather conditions under which they can sail than is normally the case for other keelboats. Group "K" boats may be excluded from racing at the Race Officer's discretion and will be signaled by flying N over K.

Each Home Club shall post on its Notice Board the list of Group "K" boats from its club and this list may also be posted on the YV Club Marine Series website.  
This list shall be posted before 1200 hrs on the Friday before the race.

**11 PRIZES**

Prizes will be presented at the Yachting Victoria presentation function. Class Associations may also present trophies for their class/division at this function. Prizes will be awarded as follows:

- First place IRC Club Premiership Trophy (Perpetual)
- First place AMS Club Premiership Trophy (Perpetual)
- First, second and third place in each Rating and Handicap System.
- First place in Class Championship

The Range Trophy will be engraved with the winners of each of the divisions, and will reside for the following season at the club of the winner of IRC Division 0.

Additional prizes may be awarded at the discretion of the OA.

**12 DISCLAIMER OF LIABILITY**

Competitors participate in the regatta entirely at their own risk. See Rule 4, Decision to Race. The organising authority will not accept any liability for material damage or personal injury or death sustained in conjunction with or prior to, during, or after the regatta.

**13 INSURANCE**

All entrants shall carry third party and public liability insurance of not less than AUD\$10 Million valid for all races.

**14 FURTHER INFORMATION**

For further information, contact Yachting Victoria  
Phone: 03 9597 0066  
Email: [sailing@yachtingvictoria.com.au](mailto:sailing@yachtingvictoria.com.au)  
Internet: [www.clubmarineseries.com.au](http://www.clubmarineseries.com.au)

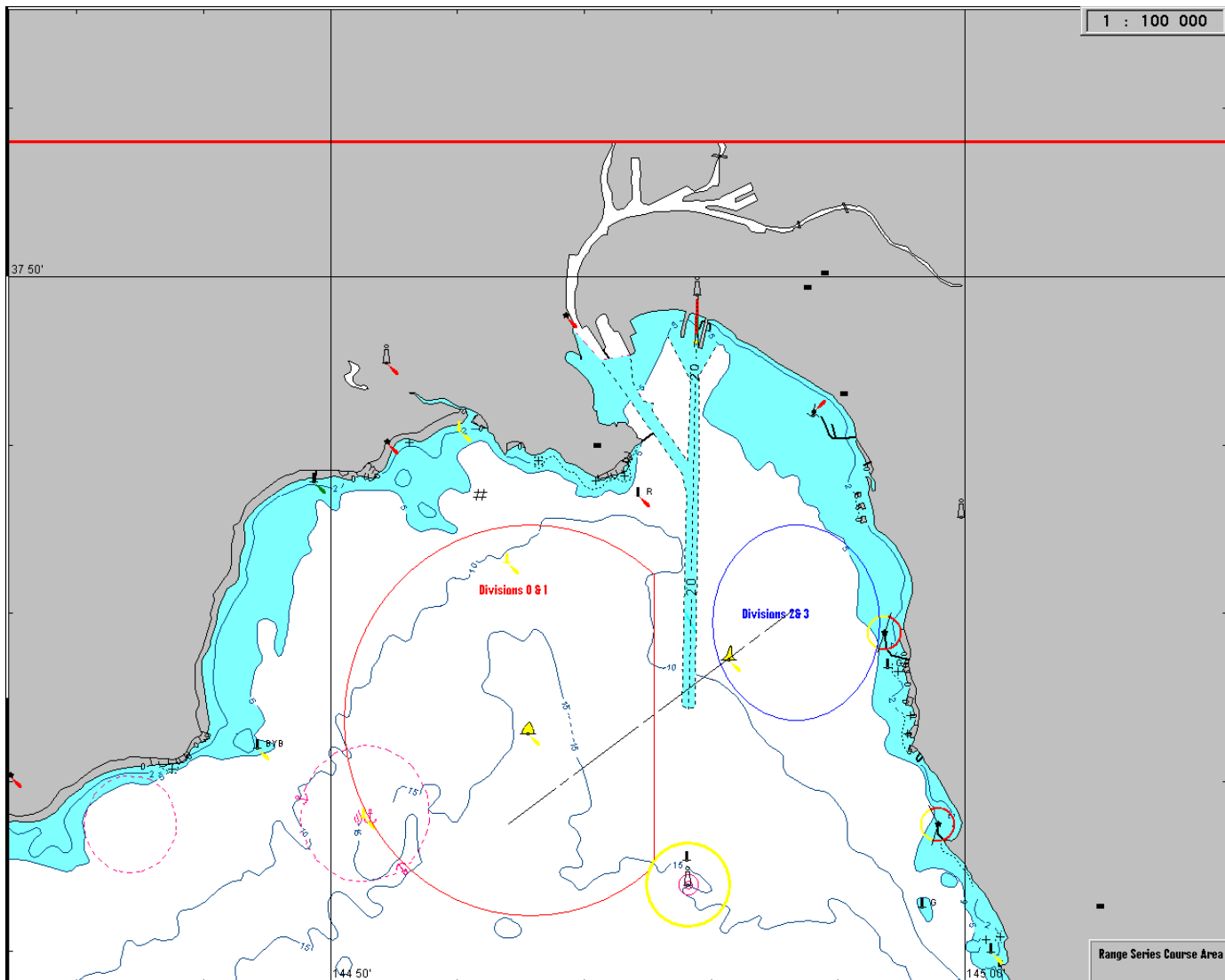
**Attachment:**

**A) INFORMATION FOR PARTICIPATING CLUBS**

- a) The participating clubs shall arrange protest hearings in a timely manner as described in the Sailing Instructions.
- b) At least one member of the protest committee shall be from the YV Racing Rules Committee.
- c) It shall be a responsibility of the host club to calculate and publish the results for its race, and have provisional race results posted on its website in a timely manner, preferably by 1800 hrs on the race day.

**B) SCORING SYSTEM FOR CLUB PREMIERSHIP SERIES**

- a) The Club Premiership Series will be scored on the afternoon races only.
- b) Seven races are scheduled of which four are required to constitute a series.
- c) The scoring for each race is in accordance with the Low Points Scoring System (RRS Appendix A) modified as follows:
  - Each boat is scored as per RRS A4.1 in its division.
  - The score of each boat is then modified by dividing each score by the number of team boats entered in that division. Thus the last boat in each division will have a score of 1, and other boats will have scores less than 1.
  - Boats that start but are DNF shall score 1.2.
  - All other boats not placing (eg DSQ, DNC, OCS, etc) shall score 1.4.
  - If a Club enters less than a full team of 5 boats then it shall be scored 1.4 for each boat less than the required 5 boats.
- d) Points on the Low Points Scoring System shall be awarded for each team boat as defined in b) above.
- e) In each race, the team scores shall be the sum of the point scores for 5 boats.
- f) The team scores shall be calculated for both IRC and AMS teams.
- g) The YV IRC Club Premiership Trophy and the YV AMS Club Premiership Trophy shall be awarded to the Club with the lowest total team points score in all completed races in each Division.
- h) Ties shall be decided according to RRS A7 and A8, with the exception that for a Series Tie RRS A8 will be modified with the team boats being listed in order of best to worst and the winning team being that team with the most first places, or then second places if a tie on first places, and so on.
- i) In the event of any race or two Divisions being abandoned, then all team boats shall score zero points.
- j) In the event of one Division of a race being abandoned, then the boats in that Division shall score average points calculated from the scores of the remaining boats from that club's team in the other two Divisions.



**AMENDMENT LOG:**

<b>Revision</b>	<b>Date</b>	<b>Amendment</b>
1	15/09/2009	Amended series scoring to include morning race for Division 0 Amended target durations